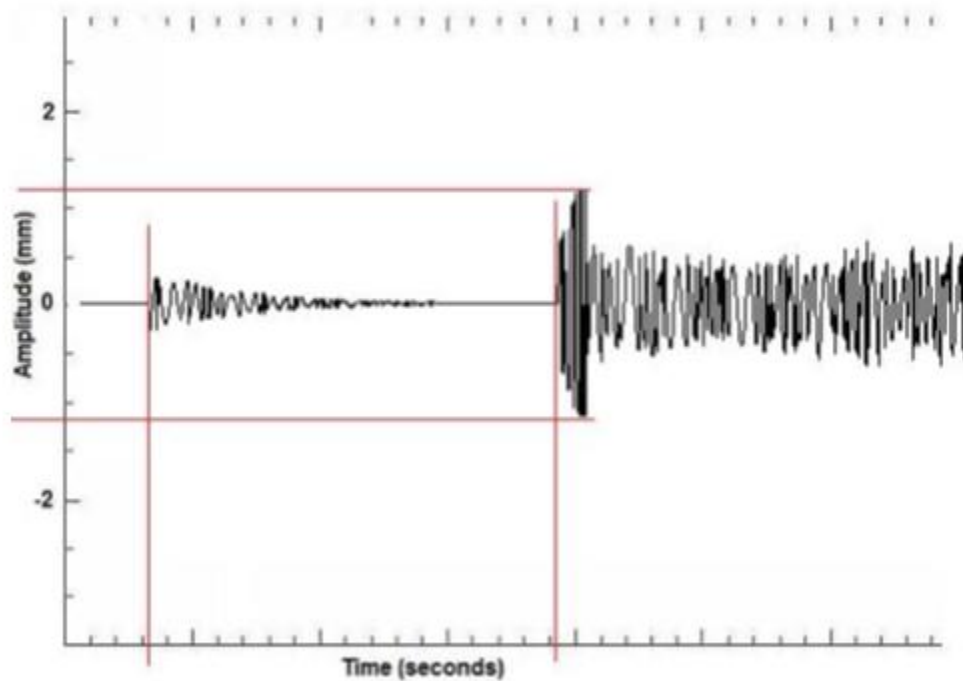


1. Which earthquake measurement scale is a quantitative measure, and which one is qualitative measure?
2. What scale do think is more useful? Use the above information to explain your reasoning in 2-3 sentences.
3. Is the following statement true or false? Explain
All earthquakes occur along plate boundaries.
4. Is the following statement true or false? The epicentre is where the break occurs along the fault causing the earthquake. Explain

Use the seismogram below to answer questions 5 and 6.



5. Calculate the distance this station is from the epicentre.
6. What is the maximum amplitude in mm?